

G & G Land Development, INC.

5011 Cumberland Road
Fayetteville, NC 28306
910-424-3311

Sinclair

160220B



FRONT ELEVATION

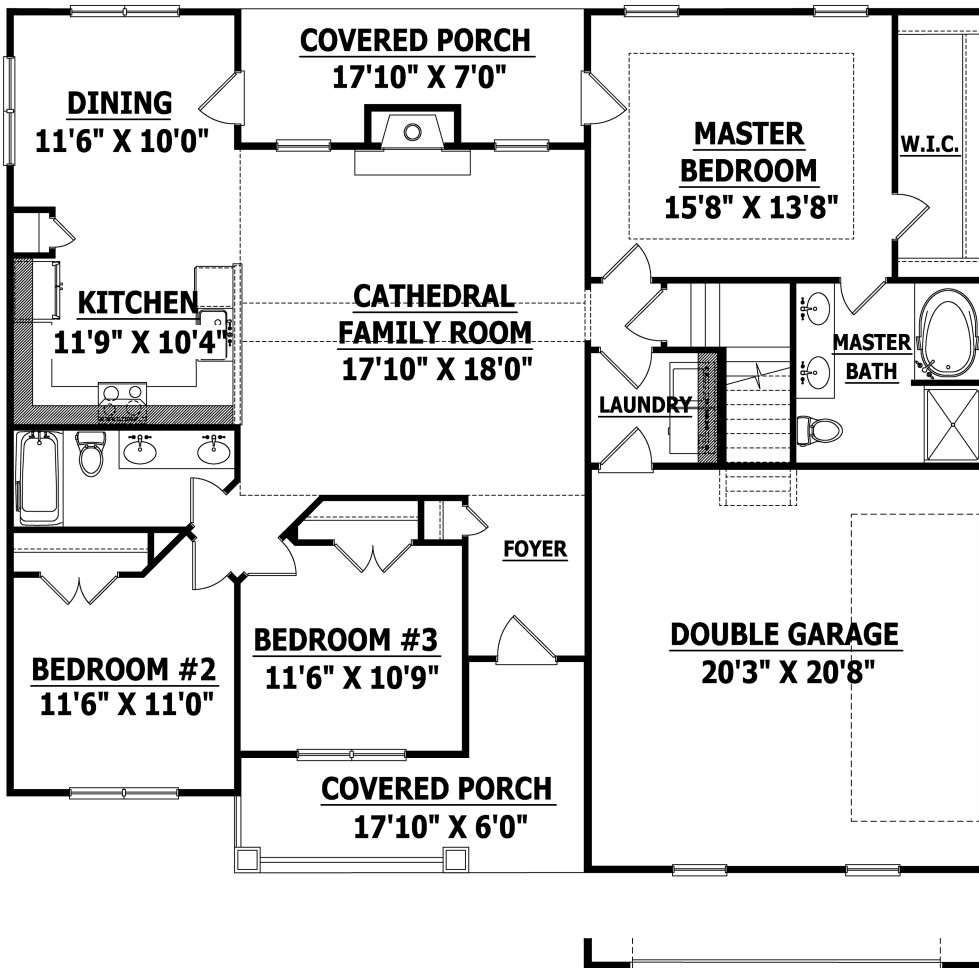
Width 51 Depth 45
SQUARE FOOTAGE

HEATED

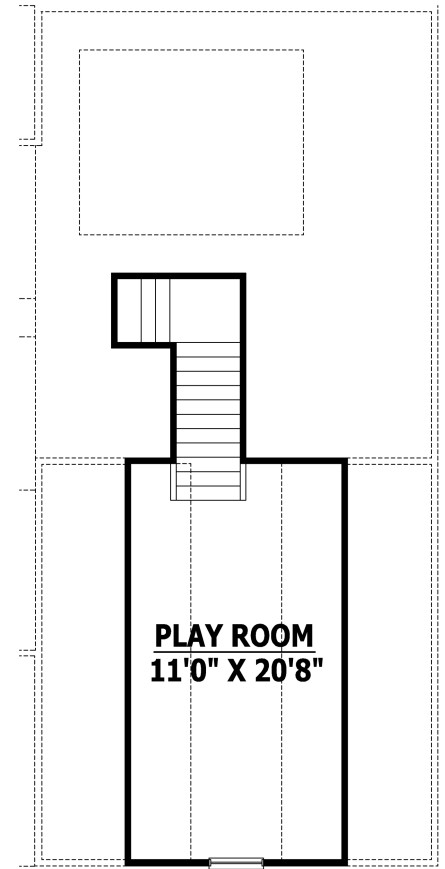
FIRST FLOOR 1547 SQ.FT.
PLAYROOM 240 SQ.FT.
TOTAL 1787 SQ.FT.

UNHEATED

FRONT PORCH 138 SQ.FT.
GARAGE 438 SQ.FT.
REAR PORCH 114 SQ.FT.
TOTAL 690 SQ.FT.



FIRST FLOOR



SECOND FLOOR