

# GMC Construction

5011 Cumberland Road  
Fayetteville, NC 28306  
910-424-3311

# Roslyn

160401B



Width 40 Depth 36  
**SQUARE FOOTAGE**

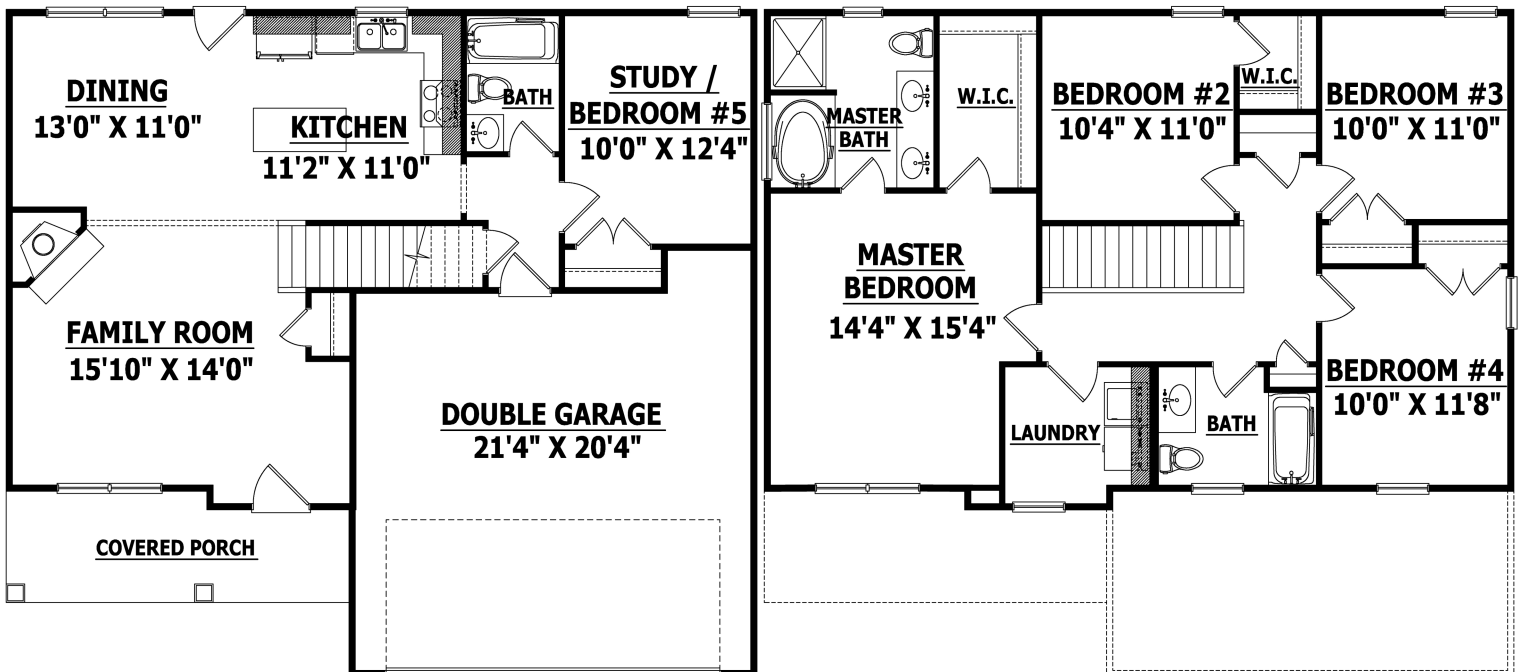
### HEATED

FIRST FLOOR	829 SQ.FT.
SECOND FLOOR	1024 SQ.FT.
TOTAL	1853 SQ.FT.

### UNHEATED

FRONT PORCH	102 SQ.FT.
GARAGE	462 SQ.FT.
DECK	144 SQ.FT.
TOTAL	708 SQ.FT.

## FRONT ELEVATION



## FIRST FLOOR

## SECOND FLOOR